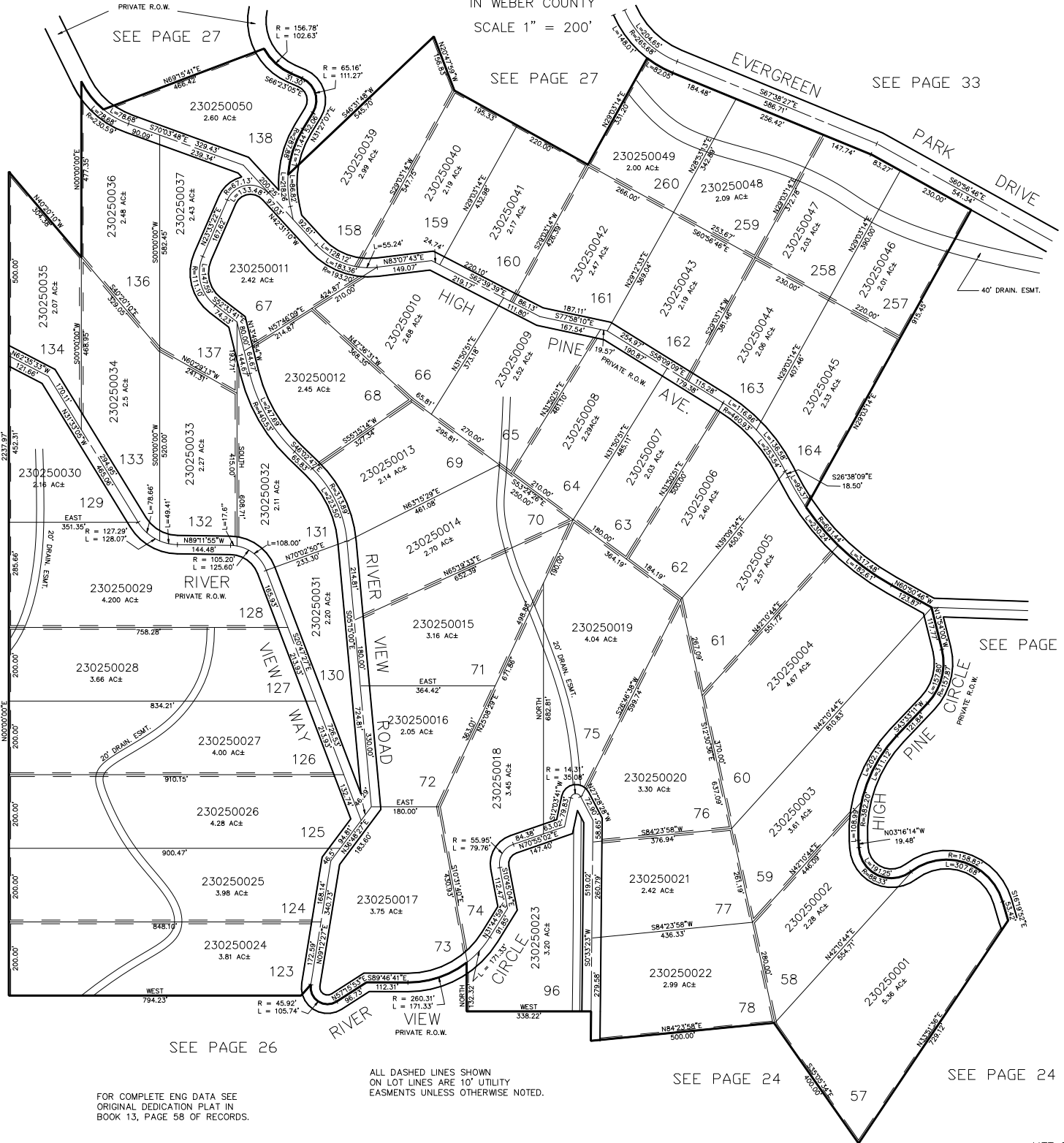


PART OF SEC. 31-32, T.7N., R.3E., S.L.B. & M.
EVERGREEN SUBDIVISION NO. 1

TAXING UNIT: 58

IN WEBER COUNTY
SCALE 1" = 200'



FOR COMPLETE ENG DATA SEE
ORIGINAL DEDICATION PLAT IN
BOOK 13, PAGE 58 OF RECORDS.

ALL DASHED LINES SHOWN
ON LOT LINES ARE 10' UTILITY
EASEMENTS UNLESS OTHERWISE NOTED.

SEE PAGE 24

SEE PAGE 24